

Bio Teaching Lab Group Meeting Notes

Held: June 8, 2009
In Attendance: Alan Kelly, Carl Stiefbold, Brendan Bohannon, Peter Wetherwax, Karen Guillemain, Fred Tepfer (Planning), Emily Eng (Planning)
Invited: George Sprague
Subject: Bio Teaching Lab Remodel, Revised Diagrams (and Next Steps?)

Background:

Comments from the April 24th meeting were incorporated into the diagrams shown at today's meeting. The goal of today's meeting was to discuss the pros/cons of the different layouts, refine our ideas for this project and discuss next steps.

Comments on General Biology Layout:

- 6 ft long X 2.5 ft deep is adequate per lab bench for 2 students
- Benches should not be less than 2 ft deep
- Breakout space is less important for General Bio (than Advanced)
- Desire access to both sides of display tables
- 3 ft aisles are good
- Prefer outlets recessed in floor (although issues) to overhead outlets
- Where should scopes be stored?
- *Generally prefer "Lab 6" layout (See attachment)*

Comments on Advanced Biology Layout:

- Want common workspace/counterspace
- Need room for incubators
- Micro benches should:
 - Be tall enough for students to stand and use scopes
 - Have room to accompany computers (1 laptop per 2 students)
 - Have gas, electricity & water
- *Generally prefer "Lab 1" layout (See attachment)*

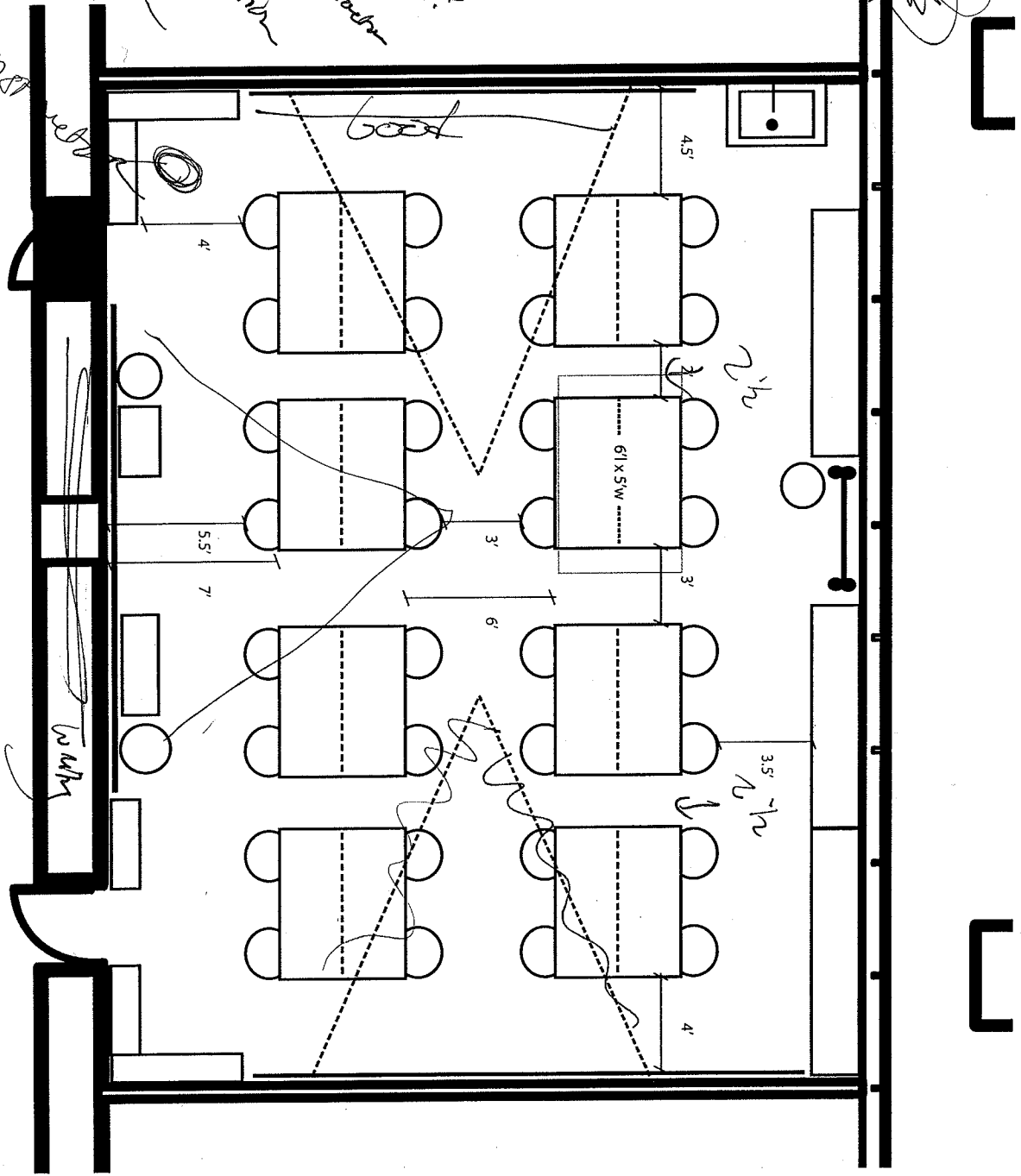
General Comments:

- What projection distance is best for students?
- 90 degree projection seems desirable
- It's important to be able to write on board and project at the same time
- Scientists generally prefer chalkboards over white boards
- Groups of 6 may not work so well
- Don't know about back-to-back chairs
- What about windows into the lab?
- Consider square tables?
- Are there opportunities to visit other labs in the area?

Next Steps:

- Discuss game plan with George Sprague
- Another group meeting to discuss/refine vision?

5 ft aisles good
 Projectors?
 Which direction is better for students?
 lighting a teacher
 lighting projection
 90° projection
 Writing + projects
 Sunfall

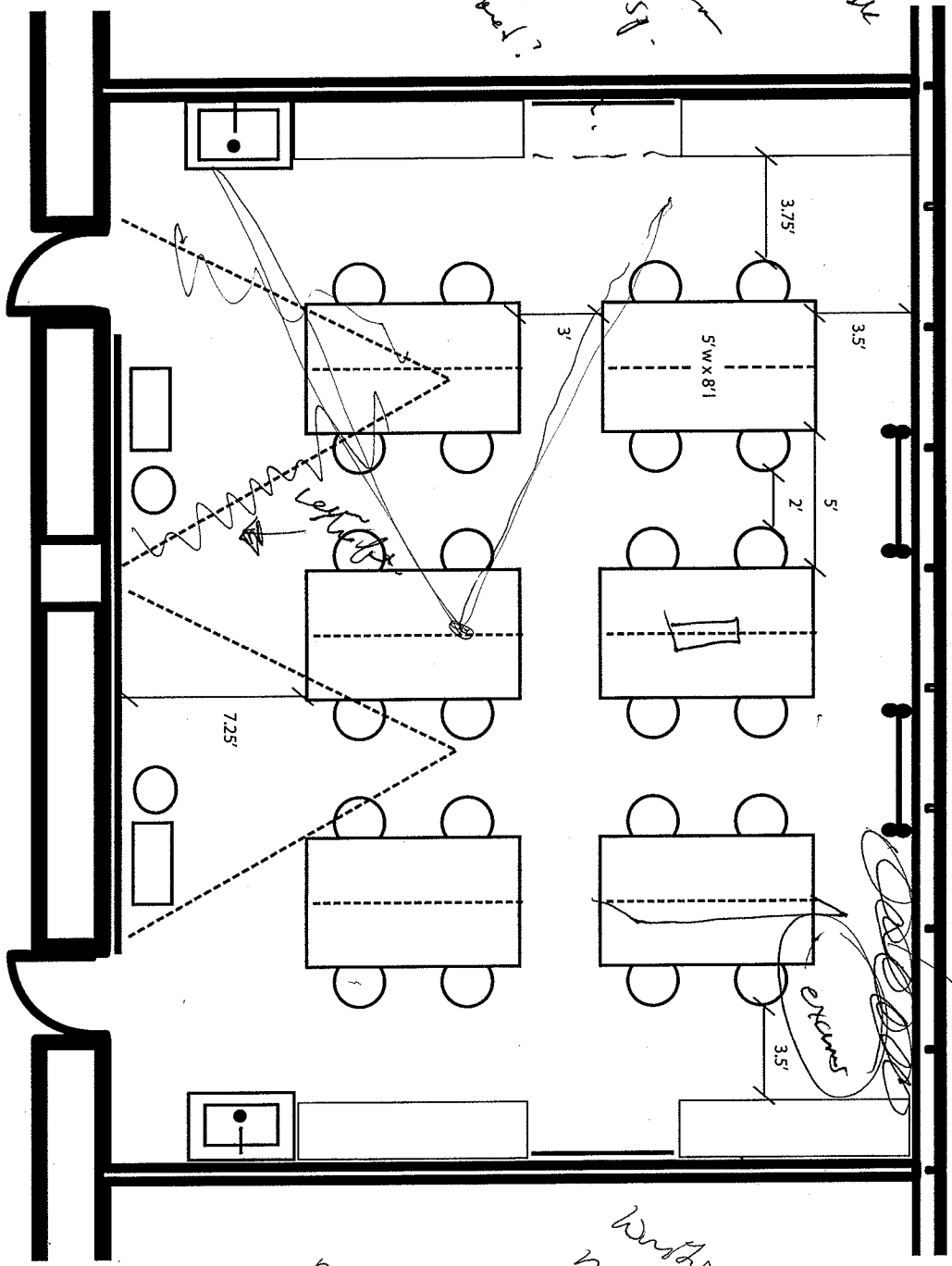


GENERAL BIOLOGY LAB-6
 JUNE 8, 2009

32 STUDENTS
 2 1/2' x 8' PER STUDENT

- Amenity 6 ft bench
 = Square table?
 Eye level @ desk
 Water @ desk
 Want counter top
 Who should
 stripes be stored?
 See labels?
 Lane's
 DUESA?

ADVANCED BIOLOGY LAB #1
 JUNE 8, 2009



Windows into
 incubators
 cellular spaces

Write surface
 measuring the
 top, put 2 squares

prefer
 chalk

24 STATIONS
 2 1/4' x 4' PER STUDENT

